

About the WOTFA

www.wotfa.org

The Washington Old Time Fiddlers Association (WOTFA) is a non-profit organization formed in 1965 to preserve and promote **Old Time** fiddle music and related arts. Old Time tunes are typically from the colonial period, civil war, and through the early 1900's, when music was often played by local community members.

Statewide, we have around 1500 members, arranged geographically into districts. Our members and musicians range in age from 4 into the 90's. We welcome new members (you do not have to be a musician to join). Membership benefits include the opportunity to compete in the State Fiddle Contest and to attend the annual Summer Fiddle Workshop, plus monthly WOTFA newsletters, which publicize all statewide activities (including shows, parades, fairs) and sheet music for a selected song each month.

We are a very active organization statewide and perform at various functions (nursing homes, retirement homes, senior centers, clubs, service groups, civic functions, and WOTFA sponsored shows) throughout the year. Donations and ticket sales from these functions are used to cover our operating expenses.

In July we host a week-long fiddle, guitar, mandolin, banjo, and bass workshop in Moses Lake, taught by nationally recognized artists. Many districts sponsor campouts throughout Washington State that are great opportunities to jam, socialize and learn new tunes.

For more information about WOTFA activities you may check the web page above and contact these district chair persons:

Pierce County (District 8)
Barbara Peterson bmacleanp@comcast.net

King County (District 6)
Roy Calvert r-calvert@msn.com

Thank you for attending our event and supporting the WOTFA!

*Washington Old Time
Fiddlers Association
District 8 Presents*

Old Time Fiddle & Variety Show

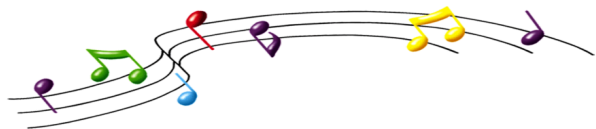


Pre-Show 1:30PM-2:00PM District 8 Contra Band
ContraDance & Square Dance Music

1st HALF

- | | |
|------------------------------|---------------|
| 1. Pam Johnston | Eatonville |
| 2. Student Showcase | Pierce County |
| 3. Prairie Rainbow | Lake Tapps |
| 4. Jeff and Jane Anderson | Olympia |
| 5. Good Intentions | Pierce County |
| 6. Katie Keller | Spanaway |

INTERMISSION



2nd HALF

- | | |
|----------------------------------|---------------|
| 1. Lyle Shaefer | Puyallup |
| 2. Tune Tamers | Pierce |
| 3. Yesterdays Soup & Crackers | Pierce County |
| 4. Jeff and Jane Anderson | Olympia |
| 5. Katie Keller | Spanaway |

THANK YOU!

Many thanks to all the volunteers and musicians who made today's show possible. And "thank you" to our audience for supporting **WOTFA**, Washington Old Time Fiddlers Association